

## WARNING!

### IMPORTANT!

Before installing the panels and crossbars, open the boxes and allow the material to acclimatize to the room for 48 hours.

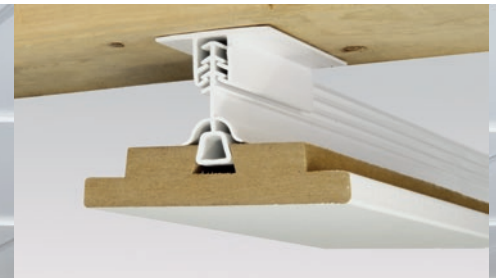
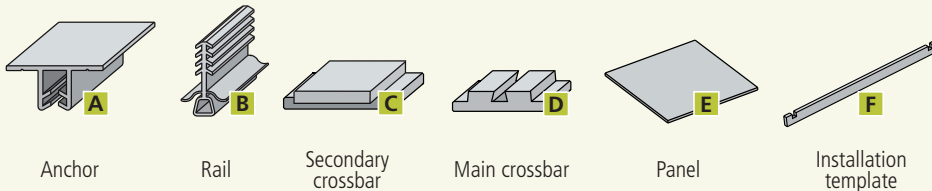
The recommended humidity level for installing an Embassy ceiling is between 45 and 55%. The panels and crossbars are covered with a polypropylene sheet. This material is not completely waterproof but still has a good tolerance to moisture when installed in damp rooms such as well-ventilated bathroom, basement and/ or cottage. It is not recommended to install the product in a place where it will be in direct contact with water. We recommend avoiding fitting the panels too tightly along the walls to allow components to expand and contract with changes in humidity level.

FOR ROOMS WITH A LARGE CEILING SPACE: The main crossbars should never be installed over a length greater than 10.668 m (35 ft). If the room is more 10.668 m (35 ft) in length. Divide it into two or more sections.

The Embassy ceiling system is not recommended for cathedral ceilings with a pitch of more than 4/12.

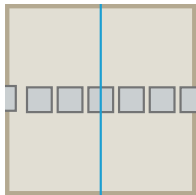
## SUSPENDED panel CEILING

Made in Canada  - Patented : PCT/CA2017/000099



Only 4.445 cm (1-3/4 in) clearance between the structure and the ceiling

## INSTALLATION GUIDE



### 1. PREPARE THE INSTALLATION

Locate the center of the ceiling space to be covered and use a chalk line to draw the room's center line. Note that the main crossbars (fig. D) must be installed in the opposite direction of the

joists.

Next, visualize how the panels will be placed by arranging them on the floor, leaving about a 2" space between them. Then determine if you have to install the ceiling beginning with centered tiles or centered crossbars.



### 2. INSTALL THE ANCHORS

Starting in the centre of the room, install anchors (fig. A) on every joist using the installation template (fig. F).

This template allows you to measure the correct distance between the anchors as well as between the anchors and the wall. Anchors must be installed on EVERY joist. Note that the distance between 2 anchors on the same main crossbar should never exceed 24". If the joists are not leveled, add furring strips to level.

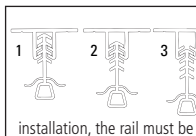


### 3. INSTALL THE RAILS

Now slide the rails (fig. B) into the main crossbars (fig. D).

You will need **six rails** per full length main crossbar.

Because the rails have to support the weight of the ceiling, it's important to always use the required number of rails.



The rail and anchor system allows you to slightly level your ceiling if needed. Note that it is not recommended to install your entire ceiling on the last level of the rail (3). For a safe and secure installation, the rail must be on the first two levels.

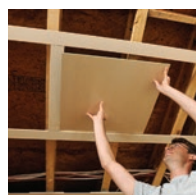


### 4. INSTALL THE MAIN CROSSBARS

You can now install the main crossbars (fig. D) by sliding the rails (fig. B) into the anchors (fig. A) that have been secured to the joists across the entire span of the room.

To avoid any pendulum effects during installation, we recommend that you install the main crossbars followed by 1 or 2 rows of secondary crossbars (fig. C), including any cut crossbars.

To fit the crossbars together use the tongue & groove portions and slide a rail into place at every joint.



### 5. INSTALL THE TILES AND SECONDARY CROSSBARS

Add the panels (fig. E) and secondary crossbars (fig. C) by starting in the center of the room and alternating on either side.



### FINISHING ALONGSIDE WALLS

The last row of secondary crossbars usually has to be cut to size. They must be cut for a tight fit to secure the structure and reduce possible movement in the components.

When cutting the last row of panels for the open spaces alongside the walls, avoid fitting them too tightly. Leaving a space between the panel and the secondary crossbar will allow the MDF to adjust to the humidity level.

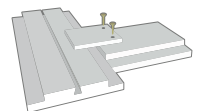
### SPECIAL SITUATIONS

#### Installing recessed spot lights

Most recessed spot lights are designed to be installed on standard suspended ceiling panels or on drywall that is 1/2" thick. Since Embassy panels are 1/4" thick, we suggest using panel cut offs (such as those from making the holes) to create a 1/2" inch layer of MDF placed under the tightening brackets of the spot lights.

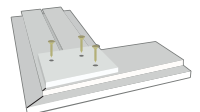
#### How to create a tenon when cutting a secondary crossbar\*

Use a 2" x 3" inch cut off of a panel and attach it to the raw MDF side of the cut end of the secondary crossbar. This will allow the cut off piece to reach the highest part of the main crossbar.



#### How to create an outside corner\*

To make an outside corner, fix with a panel cut, your main crossbar and your secondary crossbar cut at a 45 degree angle.



\*We recommend using #8, 3/4" wood screws.

### Screws are not included

We recommend using #8 1-1/4" wood screws. 2 screws are required by anchor.

### CUSTOMER SERVICE AND TECHNICAL SUPPORT

235, St-Louis  
Warwick QC J0A 1M0  
info@boulanger.ca

Tel.: 1 800 567-5813  
Fax: 1 800 363-5168  
www.boulanger.ca



Made and distributed under license by Boulanger



Installation video

